

IRF2 Antibody
Rabbit mAb
Catalog # AP90847

Specification

IRF2 Antibody - Product Information

Application	WB, IHC, ICC
Primary Accession	P14316
Clonality	Monoclonal
Other Names	
Interferon regulatory factor 2; IRF 2;	

Isotype	Rabbit IgG
Host	Rabbit
Calculated MW	39354 Da

IRF2 Antibody - Additional Information

Dilution	WB~~1:1000 IHC~~1:100~500 ICC~~N/A
Purification	Affinity-chromatography
Immunogen	A synthesized peptide derived from human IRF2
Description	Interferon regulatory factors (IRFs) comprise a family of transcription factors that function within the Jak/Stat pathway to regulate interferon (IFN) and IFN-inducible gene expression in response to viral infection. IRFs play an important role in pathogen defense, autoimmunity, lymphocyte development, cell growth, and susceptibility to transformation. IRF-2 acts as both a transcription activator and repressor.
Storage Condition and Buffer	Rabbit IgG in phosphate buffered saline , pH 7.4, 150mM NaCl, 0.02% sodium azide and 50% glycerol. Store at +4°C short term. Store at -20°C long term. Avoid freeze / thaw cycle.

IRF2 Antibody - Protein Information

Name IRF2

Function

Specifically binds to the upstream regulatory region of type I IFN and IFN-inducible MHC class I genes (the interferon consensus sequence (ICS)) and represses those genes. Also acts as an activator for several genes including H4 and IL7. Constitutively binds to the ISRE promoter to

activate IL7. Involved in cell cycle regulation through binding the site II (HiNF-M) promoter region of H4 and activating transcription during cell growth. Antagonizes IRF1 transcriptional activation.

Cellular Location

Nucleus.

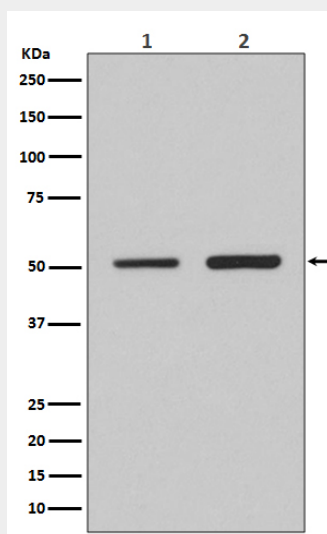
Tissue Location

Expressed throughout the epithelium of the colon. Also expressed in lamina propria.

IRF2 Antibody - Protocols

Provided below are standard protocols that you may find useful for product applications.

- [Western Blot](#)
- [Blocking Peptides](#)
- [Dot Blot](#)
- [Immunohistochemistry](#)
- [Immunofluorescence](#)
- [Immunoprecipitation](#)
- [Flow Cytometry](#)
- [Cell Culture](#)

IRF2 Antibody - Images

Western blot analysis of IRF2 expression in (1) HeLa cell lysate; (2) 3T3 cell lysate.